

## Flexible Sigmoidoscopy

Flexible sigmoidoscopy (SIG-moy-DAH-skuh-pee) enables the physician to look at the inside of the large intestine from the rectum through the last part of the colon, called the sigmoid or descending colon. Physicians may use the procedure to find the cause of diarrhea, abdominal pain, or constipation. They also use it to look for early signs of cancer in the descending colon and rectum. With flexible sigmoidoscopy, the physician can see bleeding, inflammation, abnormal growths, and ulcers in the descending colon and rectum. Flexible sigmoidoscopy is not sufficient to detect polyps or cancer in the ascending or transverse colon (two-thirds of the colon).

For the procedure, you will lie on your left side on the examining table. Typically pain medication and sedation is not given or necessary for this procedure. The physician will insert a short, flexible, lighted tube into your rectum and slowly guide it into your colon. The tube is called a sigmoidoscope (sig-MOY-duh-skope). The scope transmits an image of the inside of the rectum and colon, so the physician can carefully examine the lining of these organs. The scope also blows air into these organs, which inflates them and helps the physician see better.

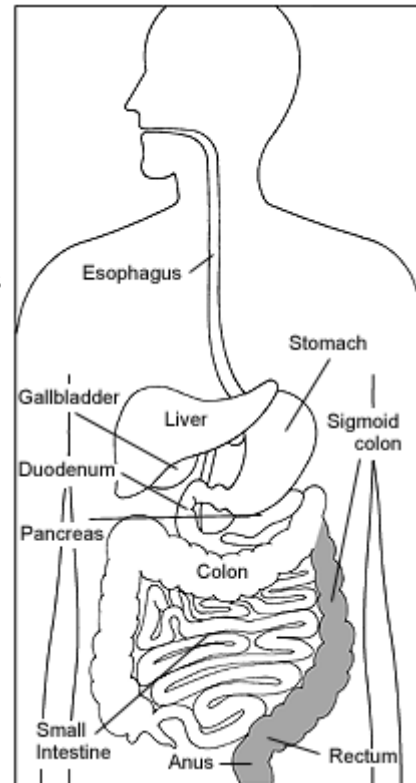
If anything unusual is in your rectum or colon, like a polyp or inflamed tissue, the physician can remove a piece of it using instruments inserted into the scope. The physician will send that piece of tissue (biopsy) to the lab for testing.

Bleeding and puncture of the colon are possible complications of sigmoidoscopy. However, such complications are uncommon.

Flexible sigmoidoscopy takes 10 to 20 minutes. During the procedure, you might feel pressure and slight cramping in your lower abdomen. You will feel better afterward when the air leaves your colon.

### Preparation

The sigmoid colon and rectum must be completely empty for flexible sigmoidoscopy to be thorough and safe, so the physician will probably tell you to use an enema at home the morning of the procedure. Your physician may give you other special instructions.



The digestive system